

Document Pack

**Democratic Services Section
Chief Executive's Department
Belfast City Council
City Hall
Belfast
BT1 5GS**



12th September, 2011

SPECIAL MEETING OF DEVELOPMENT COMMITTEE

Dear Alderman / Councillor,

The above-named Committee will meet in the Lavery Room (Room G05), City Hall on Monday, 19th September, 2011 at 5.15 p.m., for the transaction of the business noted below.

You are requested to attend.

Yours faithfully

PETER McNANEY

Chief Executive

AGENDA:

1. Routine Matters
 - (a) Apologies
2. In accordance with the Committee's decision of 15th June, to receive representatives from Titanic Belfast to discuss matters relating to the Titanic Memorandum of Understanding

This page is intentionally left blank



Belfast City Council

Report to:	Special Development Committee
Subject:	Titanic Quarter Memorandum of Understanding Update
Date:	19 September 2011
Reporting Officer:	John McGrillen, Director of Development, ext 3470
Contact Officer:	Lisa McCartney, Programme Coordinator, ext 3650

1	Relevant Background Information
1.1	Members will recall that Council's Development Committee, at a meeting on 15 June 2011, agreed that a special meeting, to which all key Titanic Quarter stakeholders would be invited, be held to receive an update on the regeneration of Titanic Quarter including the construction and operation of Titanic Belfast; and to discuss the Memorandum of Understanding and its associated achievements.
1.2	Members have previously noted that Titanic Quarter Ltd (TQL) is the company taking forward the development of the Titanic Quarter in a joint venture with the owners of the land, Belfast Harbour Commissioners. At £7bn and covering 185-acres Titanic Quarter is the largest urban regeneration project in Northern Ireland's history and one of the largest waterfront schemes in Europe. Mike Smith, the Chief Executive of TQL will be present at the meeting to update Members on the overall development of Titanic Quarter.
1.3	Located in the heart of Titanic Quarter is Titanic Belfast, Northern Ireland's largest ever tourism project. It is funded by the NI Executive, Belfast Harbour, Belfast City Council and TQL and is on schedule for completion by March 2012 in time to mark the centenary of RMS Titanic's maiden voyage a month later. Titanic Belfast is an iconic six-floor building featuring nine interpretive galleries over four floors. The building will house temporary exhibits, a 1,000-seater banqueting suite, education and community facilities, catering and retail space and a basement car park. With around 400,000 visitors per year expected it will generate significant economic and social benefits for all of Northern Ireland. Titanic Belfast will be a major driver of tourism, giving Belfast a truly stunning visitor experience and providing a focal point for Belfast's unrivalled Titanic heritage – integrated for the first time under the banner of Northern Ireland's 'Titanic Signature Project'.

<p>1.4</p> <p>1.5</p> <p>1.6</p>	<p>Owned by a new charitable trust, Titanic Foundation Ltd (TFL), Titanic Belfast will be a platform for innovative educational initiatives and cross-community events to inspire future generations of ‘Titanic Thinkers’. The TFL Board consists of seven independent trustees. The present Chairman of the board is Jonathan Hegan, a past chairman of RPS Consulting Engineers, and the acting Chief Executive of TFL is Brian Gregory. Both will attend the Committee meeting to update Members on the construction of Titanic Belfast, which is being undertaken by Harcourt Construction (NI) Ltd, in contract with TFL. TFL’s update will include the implementation of social clauses within the construction contract.</p> <p>In April 2011 TFL announced that Harcourt Developments Ltd had been appointed operator of the iconic £97m visitor attraction. As operator, Harcourt will be responsible for delivering Titanic Belfast’s attractions and day-to-day running. The company will also be responsible for marketing and promoting the facilities within the building, including banqueting and conference facilities and its permanent visitor exhibitions and educational facilities. Conal Harvey, Director of Group Operations at Harcourt and Tim Husbands, Chief Executive of Titanic Belfast will be in attendance at the Committee to present to Members a detailed update on the operations and management of Titanic Belfast.</p> <p>The Titanic Watch and Belfast Area Partnership Forum have each been invited to nominate one representative to attend this Special Meeting of Development Committee.</p>
----------------------------------	---

<p>2</p> <p>2.1</p> <p>2.2</p> <p>2.3</p>	<p>Key Issues</p> <p>As a condition of Council’s funding towards the construction of Titanic Belfast, TQL entered into a Memorandum of Understanding with the Council in 2009, which set out its commitment to actively work with the Council, key government departments and the community to optimise the city and community benefits of the development of Titanic Quarter.</p> <p>The agreement contained in Appendix 1 sets out obligations on both parties and a number of Government Departments to ensure that people from all over the City have the capacity to access the opportunities arising from the regeneration of the 185-acre site. The MOU sets out the governance structure and management arrangements for taking this process forward and seeks to promote partnership working across a number of priority areas namely, work, tourism, housing, space, access and outreach. Working Groups have been set up under each of these themes, all of which are now functional. A detailed report on the progress of the various workstreams is presented below.</p> <p><u>TQ Work</u></p> <ul style="list-style-type: none"> - An inter-agency TQ Work Group has been established to develop and implement an action plan which provides access to skills and training aimed at meeting the needs of Titanic Quarter’s employers. - The Work Group coordinates recruitment, training, skills and education programmes and focuses on the creation of bespoke employment approaches and initiatives to meet the needs of target groups including the long term unemployed, apprentices, graduates and undergraduates. - A sub-group has also been established to meet the needs of the TQ Work Group and consists of members of the local community, training providers,
--	---

	<p>partnership boards, local and central government officials.</p> <ul style="list-style-type: none"> - With local representation on both the work group and the sub group local communities are kept fully informed about upcoming employment and training opportunities and specifically designed pre-employment programmes have been developed to suit local needs. - Through the DEL jobcentreonline and Belfast City Council websites citizens are regularly updated of upcoming job opportunities. Citizens can register their interest in employment, training or skills opportunities within Titanic Quarter and their details can be added to an employment database on request. Those on the database are alerted when a particular job that suits their requirements becomes available. - Social clauses in the construction element of Titanic Belfast have been applied and are based upon government guidelines as set out by the Central Procurement Directorate. DEL has agreed protocols with EC Harris and Harcourt for the sharing of information and the validation of long-term unemployed and apprentices. - A series of employer events and community information sessions will be held in September, October and January to gauge recruitment and upskilling plans for companies in Titanic Quarter and to inform local communities of upcoming employer vacancies in Titanic Quarter including the Titanic Belfast attraction. <p>2.4 <u>TQ Access</u></p> <ul style="list-style-type: none"> - Provision of a dedicated high frequency bus service linking Titanic Quarter and the City Centre commenced on 1 September 2011 and operates every 12 minutes at peak times and every 20 minutes at other parts of the day. - The Strategic Investment Board (SIB) has commissioned a study into the potential for enhanced pedestrian and cycle connections to Titanic Quarter. RPS Consultants have identified a number of existing and potential routes that could be enhanced including connections to the Connswater and Comber Community Greenways. Project plans for each route are being considered by the different stakeholders and the TQ Access Group is considering the potential for the different elements and the prioritisation of activity. - A Connect2 project is one of the links in the RPS report and Sustrans has approached the Council in relation to the potential for a partnership project that would connect Titanic Quarter with the Connswater and Comber Greenways via a new route through Bridge End Halt, Fraser St (re-opened) and Sydenham Rd. At SP&R Committee on 19 August, 2011 Council agreed to take the lead partner role for this project and approved the signing of a Memorandum of Understanding. The role of the Council as lead partner is to ensure the completion of three broad work packages which make up the overall project, including the: <ol style="list-style-type: none"> I. highway crossing and potential traffic calming between the Bridge End Halt and King's Road; II. improvement around the Bridge End Halt; and III. re-opening of Fraser Street and the connection into the Titanic Quarter via the Sydenham Road. - Fraser Street which was closed some 10 to 15 years ago after a security incident is part of the Connect2 project and Belfast Harbour has agreed in principle to open up the connection as part of the joint scheme. - Bridge End Halt will be upgraded in parallel with the works under the Connect2 project finishing March/April next year and Translink are in the
--	--

	<p>process of formally considering the name change to Titanic Halt or Titanic Quarter Halt.</p>
2.5	<p><u>TQ Outreach</u></p> <ul style="list-style-type: none"> - Council has embarked on a major engagement exercise with every section of society in partnership with TFL, ensuring that everyone in Northern Ireland can benefit from the substantial public investment in Titanic Quarter. - A Community Engagement Plan has been developed. To assist with its implementation Council has designed a 2012 Ambassador Programme and has recruited 50 suitably skilled individuals to be the public face of the outreach programme. Training and support for Ambassadors is currently being designed. - Whilst a number of individuals across Council and in partner organisations have agreed to participate on the Ambassador Programme, it is requested that Elected Representatives also consider championing the Titanic/2012 brand, promoting all activities and events and helping sell its key benefits across the city. - Key projects to be delivered locally are being identified in partnership with members of the local community and partnership boards. - Council has commenced a process internally to review ways in which grant funding activities might be re-branded to support Titanic related activity and how Titanic/2012 opportunities can be profiled at Council led events. - Area Partnership Boards have provide details of key local groups to be engaged with; local communication mechanisms to tap into; potential programmes, events and activities taking place in their respective areas and likely local issues to be aware of when delivering outreach initiatives. - Internal and external contact databases have been created which will be used as a distribution list for information to be communicated locally. - Hard hat tours to Titanic Belfast have been facilitated for Members, Officers and Ambassadors during July - September.
2.6	<p><u>TQ Tourism</u></p> <ul style="list-style-type: none"> - The Belfast Tourism Forum, including representatives from key private and public stakeholders has been established to oversee delivery of the Belfast Integrated Strategic Tourism Framework 2010-2014 and a number of Titanic related actions have been prioritised for 2011/2012. - Council is leading on the implementation of a Titanic signage project aiming to connect pedestrians to the Titanic Quarter. This project includes the design, development, manufacture and installation of motorway and city based tourism signs as well as the design, production and distribution of Titanic and Maritime Visitor Trail maps. - Council, Translink, BVCB and NITB have piloted a new Belfast Visitors Pass for 2011 linking integrated bus and rail travel across the city to discount schemes in attractions and retail and catering outlets. The pilot will be reviewed later this year in anticipation to making improvements for 2012. - The Strategic Investment Board (SIB) commissioned Deloitte to develop an implementation and funding plan for the maritime heritage assets of Titanic Quarter. The report sets out a number of development requirements and specific funding opportunities associated with each of the individual assets.

	<ul style="list-style-type: none"> - An industry engagement programme in support of Titanic 2012 has been developed. This programme presents a series of integrated events and activities to be delivered by BVCB in partnership with Council, BCCM and BCTC at a variety of audiences at different levels who need to be fully engaged and informed about Titanic 2012 including those individuals, organisations and businesses involved in Belfast's tourism development and promotion. - Council has secured £400k of European funding to deliver 'Destination Belfast' - a programme aimed at supporting a range of initiatives for the tourism sector in Belfast including increased customer care, business skills, product knowledge and maximising the opportunities arising from 2012 and 2013. - Tourism Ireland, NITB and BVCB will all focus marketing activities for 2012 on Titanic Belfast which will support the city to increase its share of visitors from ROI and GB in particular.
<p>2.7</p>	<p><u>TQ Housing</u></p> <ul style="list-style-type: none"> - A condition in the original planning agreement for Titanic Quarter is that a minimum of 15% of the residential accommodation shall be allocated for affordable housing, of which a minimum of 10% shall be allocated within Phase 2. The remaining 5% may be in offsite locations in the Belfast Metropolitan Area. - Whilst the current downturn in the housing market has delayed the construction of Phase 2 TQL is committed to ensuring that social and affordable housing units will be pepper potted throughout the development and will be indistinguishable from the private housing units in each block. - Until TQL has a better sense of when Phase 2 will begin the TQ Housing group is content to leave the date of next meeting on a 'to be confirmed' basis, with TQL having agreed to come back to Council when there is a greater understanding of market demand for Phase 2.
<p>2.8</p>	<p><u>TQ Space</u></p> <ul style="list-style-type: none"> - A network of open spaces and public realm will be provided as an integral part of the Titanic Quarter development including: <ol style="list-style-type: none"> i. The 'Kit' by Tony Stallard is the first public artwork for the Titanic Quarter and is sited in the public realm area facing the Abercorn Basin. Production of the artwork coincided with completion of Phase 1 of the ARC development in October 2009. ii. A new area of open space opened in December 2010 at Abercorn Basin (in front of the ARC Apartments) incorporating a new Marina within the Basin and new dock walls. iii. Titanic Belfast will be iconic in design and is due to open to the public at the end of the first quarter, 2012. The creation of a piazza around this building will act as a major public space for the city. iv. The slipways of Titanic and Olympic will together create a high profile area of public realm. v. Heritage Lottery Fund recently announced confirmed funding of £3.2m to enable the Nomadic Trust to restore the last remaining White Star Vessel, <i>SS Nomadic</i>, and the Hamilton Graving Dock. External and internal refurbishment works will be completed in 2012.

2.9	In order to effectively engage, disseminate information and seek local views on the operation of the Memorandum of Understanding and wider Titanic Quarter development, Council is now asked to consider Member nominations to participate on a Titanic Quarter All Party Working Group.
-----	--

3	Resource Implications
3.1	There will clearly be resource implications in terms of the Council committing both officer and member time in engaging and overseeing the established governance arrangements for the Titanic Quarter MOU.

4	Equality and Good Relations Considerations
4.1	There are no Equality and Good Relations considerations attached to this report.

5	Recommendations
5.1	<p>Members are asked to:</p> <ul style="list-style-type: none"> I. Note the contents of the report; II. Consider Member nominations for a Titanic Quarter All Party Working Group and to meet informally regarding MOU progress; III. Consider Member nominations to support the 2012/Titanic brand; and IV. Note a further report on MOU progress will be presented to Committee in due course.

6	Decision Tracking
If recommendations are accepted, meetings of the All Party Working Group will be arranged and a further update will be presented to a future meeting of the Development Committee.	

7	Documents Attached
Appendix 1 – Signed copy of the MOU	

8	Abbreviations
<p>BCTC – Belfast Chamber of Trade and Commerce BVCB – Belfast Visitor and Convention Bureau DEL – Department for Employment and Learning MOU – Memorandum of Understanding NITB – Northern Ireland Tourist Board SIB - Strategic Investment Board TFL – Titanic Foundation Ltd TQL – Titanic Quarter Ltd</p>	



Memorandum of Understanding



Between Titanic Quarter Limited & Belfast City Council To Promote PARTNERSHIP AND REGENERATION

1. Purpose

Titanic Quarter Limited and Belfast City Council recognise that the Titanic Quarter is a key economic asset and a future catalyst for high quality investment which will support the continued revitalisation of Belfast and Northern Ireland.

There are clearly significant benefits to be realised through a more collaborative approach to taking forward the regeneration of Titanic Quarter. We seek to ensure that everyone within the city has fair access to the opportunities which emerge and that investors have direct access to the human resources and skills base available in Belfast.

This document outlines the declaration, objectives and principles that together form the basis of a mutual partnership agreement between Titanic Quarter Limited and Belfast City Council.

2. Declaration

In signing this Memorandum of Understanding both parties are committed to working in partnership with public, private, voluntary and community sector organisations to create the necessary conditions to **optimize the city and community benefits of the Titanic Quarter development, to demonstrate good corporate citizenship and provide a recognised route for Titanic Quarter Limited's engagement with the city and community.**

3. Objectives

The practical outcomes sought from the execution of the MOU include:

1. To promote Titanic Quarter as a prime employment option for local people and improve the skills of local people in accordance with employers' needs
2. To ensure that appropriate mechanisms are put in place to improve community awareness, engagement and ownership of the Titanic Quarter development
3. To plan and deliver, with support from other relevant bodies, a comprehensive package of regeneration benefits for local people and communities including the adjoining East Belfast.
4. To develop better connectivity/linkages between the Titanic Quarter, the city centre and local communities.
5. To ensure that the Titanic Quarter contributes to enhancing the wider tourism product of the city.
6. To ensure a focus on achieving sustainable outcomes that contribute to the enhancement of environmental, social, cultural and heritage values of the city.
7. To support the establishment of sustainable communities through the adequate provision of affordable and social housing and the provision of necessary social infrastructure.

4. Principles

The following principles will underpin the Memorandum of Understanding and guide the activities of the co-signatories.

- **Leadership:** recognise that successful cities demonstrate a quality of strategic leadership that nurtures a shared commitment to a strong, clear vision of the future
- **Partnership:** recognise that we cannot deliver everything on our own and are committed to working in partnership to ensure co-ordinated solutions are developed in response to the challenges facing the city
- **Engagement:** recognise that effective community involvement and development is essential for successful regeneration. Local people should continue to be at the heart of the process
- **Commitment:** ensure that everyone has fair access to the economic, social, environmental and physical regeneration benefits to emerge from the development of Titanic Quarter
- **Transparency:** ensure greater openness and communication with key stakeholder groups on relevant issues
- **Integration:** ensure that the regeneration of the Titanic Quarter supports and complements the wider regeneration of the city
- **Sustainability:** ensure that the investment decisions and infrastructure we build today leave a lasting legacy for future generations

5. Priority Themes for Action

In order to achieve the objectives set out within the Memorandum of Understanding there are a number of priority areas which need to be taken forward. These include:

- 1) Employment, Education and Skills
- 2) Accessibility and Transport
- 3) Community outreach
- 4) Housing
- 5) Tourism development and promotion
- 6) Quality Open Space and Public Art

6. Process

A suite of six detailed **Thematic Action Plans** will be developed, in partnership with other key stakeholders including the community sector and relevant statutory service providers, for each of the priority themes identified above and will be attached as an addendum to the MOU with its implementation monitored.

Refer to Appendix 1 for initial working drafts of the Thematic Action Plans with indicative actions identified.

7. Management Arrangements

A three tier governance structure comprising of a Strategic Advisory Board, a Co-ordinating Steering Group and Thematic Working Groups, will be established to take forward the development, implementation and monitoring of an overall Implementation Plan and its sub-component action plans.

7.1 Strategic Advisory Board

Comprise of key representatives from the community sector, Government Departments, Belfast City Council and Titanic Quarter Limited

Roles and Responsibilities

- Provide an overall guiding body and a forum for constructive dialogue to discuss and resolve issues/conflicts as they arise.
- Provide strategic guidance and advice.
- Liaise and feedback to the TQL Board, Belfast City Council and NI Executive as required
- Oversee, monitor and scrutinise the agreed outputs in the Implementation Plan

7.2 Co-ordinating Steering Group

Comprise of officials from Titanic Quarter Limited, Belfast City Council and lead representative on behalf of the Belfast Area Partnership Boards.

Roles and Responsibilities

- Drive forward and manage the MOU.
- Monitor progress.
- Review and update Implementation Plan
- Undertake risk assessment to identify barriers and opportunities.
- Identify tasks and delegate to Working Groups
- Evaluate information from the Working Groups
- Resolve issues arising
- Feedback to Strategic Advisory Board and Thematic Working Groups

7.3 Thematic Working Groups

Comprise of representatives from relevant Government Departments, statutory service providers, the community sector, officials from Belfast City Council and Titanic Quarter Limited.

Roles and Responsibilities

- Development of a programme of work and detailed action plan
- Co-ordinate the implementation of the projects and programmes arising from the action plan
- Engage relevant partners and support the integration and alignment of existing mainstream programmes
- Review the work plans periodically and feedback to the Co-ordinating Steering Group on a quarterly basis.

8. Monitoring & Review

To provide further transparency within the process, Belfast City Council will have nominated elected representatives on the proposed Strategic Advisory Board which has responsibility for overseeing, monitoring and scrutinising the agreed outputs in the Implementation Plan and ensure that the benefits underpinning the MOU are realised.

Both Titanic Quarter Limited and Belfast City Council will designate a lead liaison officer who will be the central point of contact between both parties and who will participate on and support the work of the Co-ordinating Steering Group.

9. Legal Status

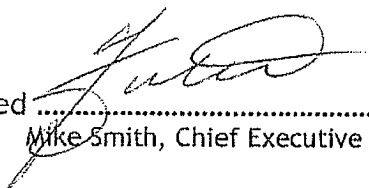
The Memorandum of Understanding will be incorporated as a condition of Belfast City Council's funding as set out within the overall Funding Agreement to be entered into by Titanic Quarter Limited, the Northern Ireland Tourist Board, the Department of Enterprise, Trade and Investment and Belfast City Council in relation to the Titanic Signature Project.

The MOU shall operate upon signature by both parties and shall remain in effect for a maximum of 5 years. The MOU will be reviewed by the parties annually and may be amended or terminated by written agreement between the parties.

Any disagreement arising from the interpretation of this MOU should be considered within the spirit implicit in the co-operation arrangements. Sensible negotiation of disputes assures continuation of the development and prevents the collapse of the project and consequently the waste of public funding.

Whilst it is intended that the arrangements in this MOU should apply generally, it is recognised that some circumstances will require special handling. Nothing in this MOU prevents the making of arrangements to meet specific exceptional needs.

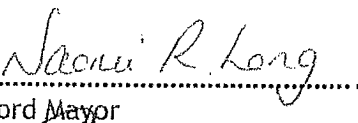


Signed 
Mike Smith, Chief Executive

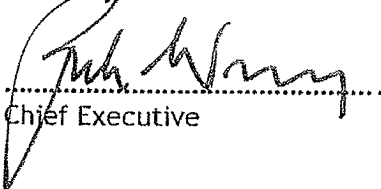
Date: 9/June/2009



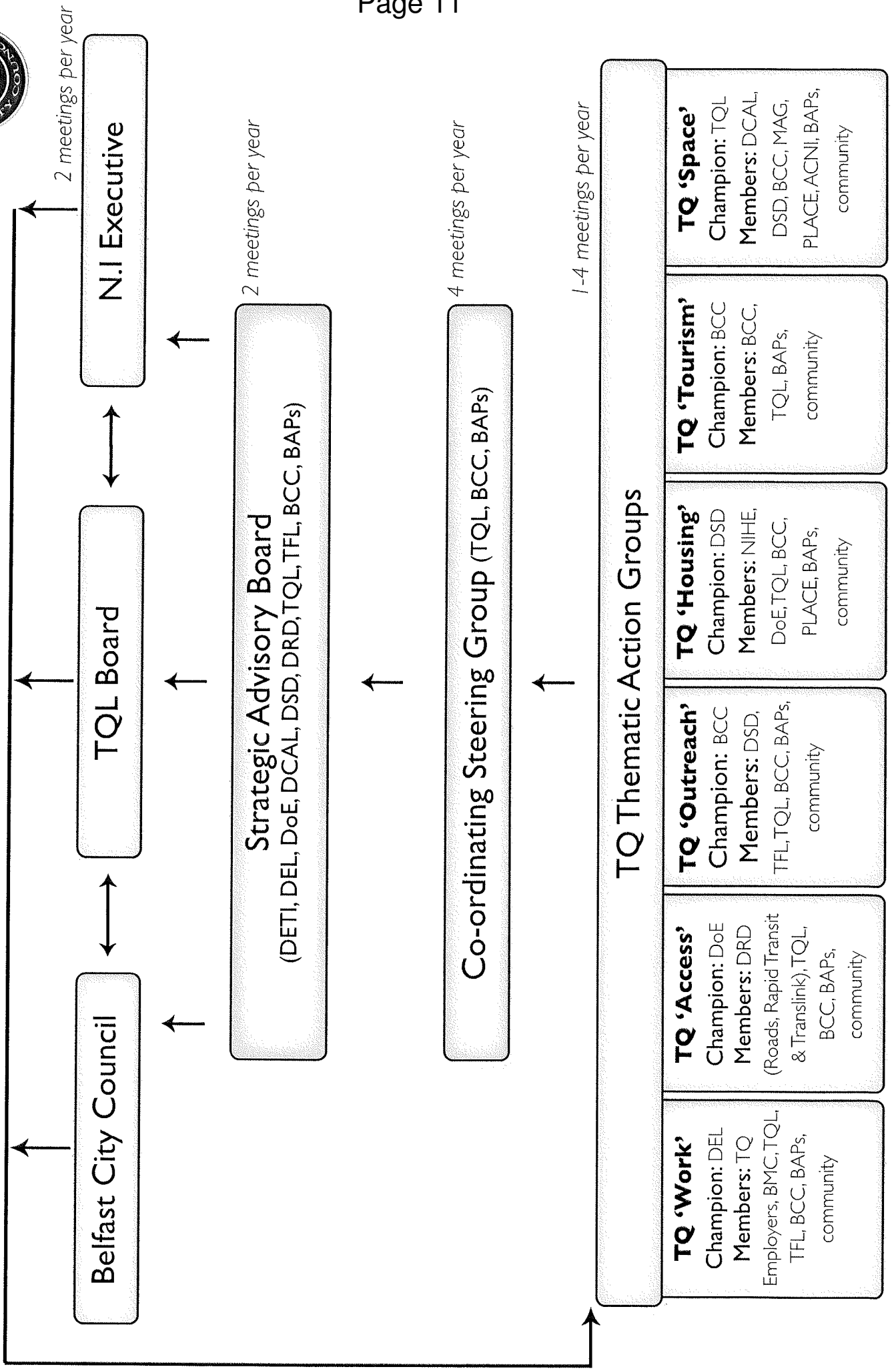
Signed for and on behalf of Belfast City Council


Lord Mayor

Date: 25/June/2009


Chief Executive

Date: 25/June/2009



This page is intentionally left blank